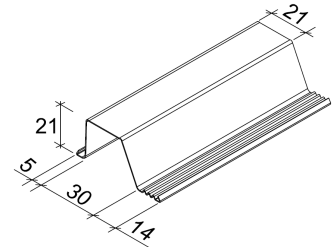


QUIKBATT

FOR TILED ROOFS ONLY

Tile Roof Batten TB42

BMT (mm)	0.42
Yield Strength (MPa)	550
Coating Mass (g/m ²)	AM150
Mass (kg/m)	0.31

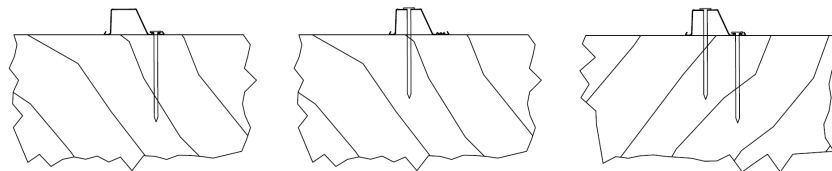
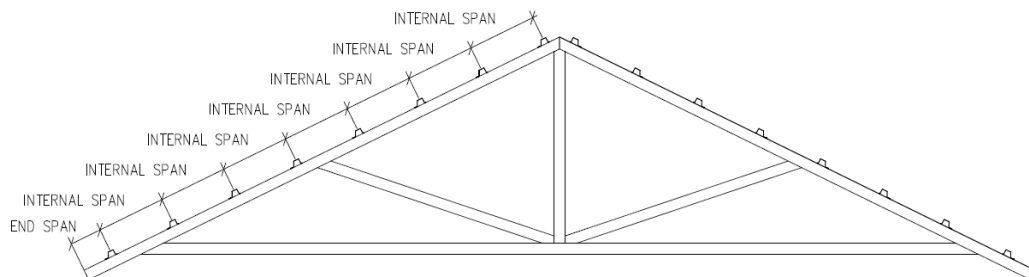


Allowable Roof Batten Spacing (Non-Cyclonic) for 600mm Truss Spacing

Roof Cladding	Truss Spacing (mm)	Purlin Spacing Max. Centres (mm)	
		End Span	Internal Span
Tiles	600	110	350

Note:

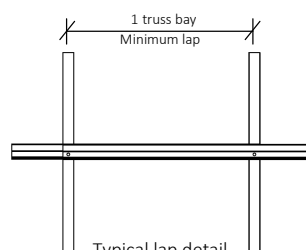
- TB42 is made from TRUECORE® high tensile light gauge steel with Activate™ technology, G550/AM150 complying with AS 1397
- Fastener selection for fixing TB42:
 - Pine rafters, 75x3.06mm galvanised D-head impulse framing nail per joint alternating between top and bottom. Use 2 per joint at free ends.
 - Steel truss chords (minimum truss chord BMT – 0.75mm) 2/10-16x16 Class 3 hex head tek screws per joint. Use 2 per joint at free ends.
- Tile batten spacing to remain the same for wind categories W28, W33 and W41. Internal spans may vary between 310 – 350mm.



*See Note 2(a)

Lapping Battens

To minimise cutting, lay all battens in one direction, starting from one end of roof.
Hip-valley roofs: lay battens starting from valley.



Minimum spacing required from lapping battens